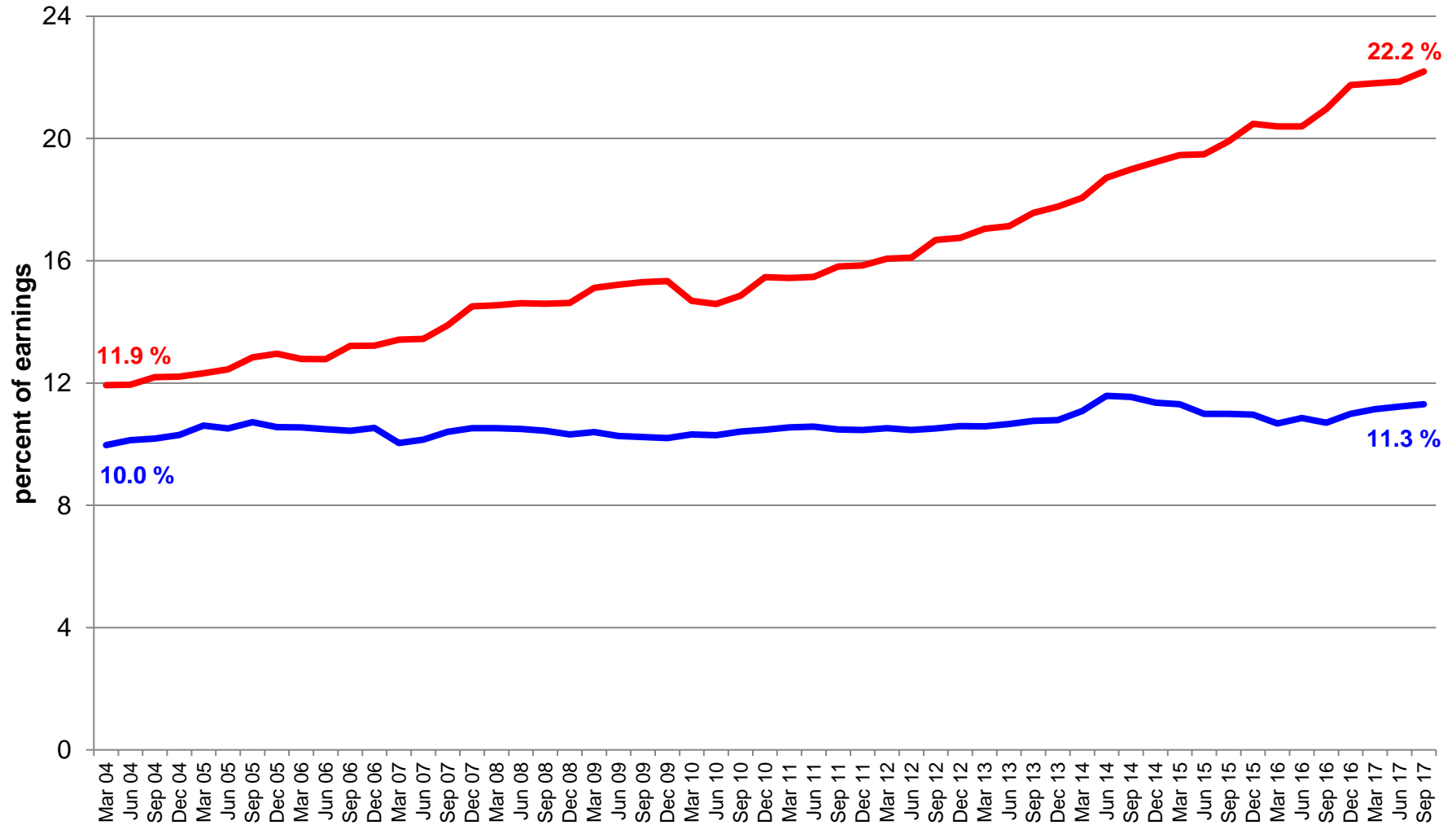


## Employer Contributions for Retirement Benefits and Social Security: Public School Teachers and Private-Sector Managers and Professionals



Source: BLS, National Compensation Survey, Employer Costs for Employee Compensation;  
Robert Costrell and Michael Podgursky, "Teacher Retirement Benefits," *Education Next*, Spring 2009  
authors' estimate of teacher SS contributions, using BLS estimate of SS

— public K-12 teachers     
 — private management & professional